

Race Leys Infant School

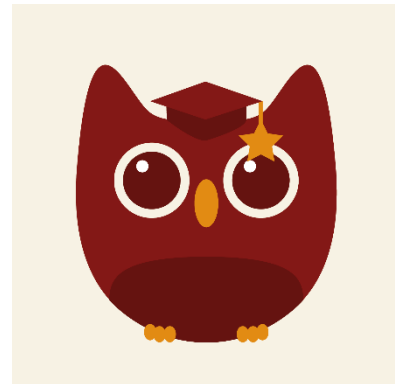
The National Phonics Screen and Reading
in Year One

Parent Information Meeting
Wednesday 5th March 2025



What reading does your child do at Race Leys?

- 45 minute daily Read Write Inc (RWI) lesson.
- 10 minute daily speed sounds review session as a class.
- Individual reads with adults in school or volunteers.
- Reading within curriculum subjects.
- Learning the 45 common exception words linked to Year One.



Our Reading Scheme

Your child became a reader on their second week in Reception when they learnt the sounds m, a, s and t.

They have daily RWI lessons in a group of children who are working to secure the same sounds.

They are assessed every half term (or earlier if we can see they have made progress).

Teachers are made of aware of particular sounds the children are struggling with to work on in class.

When your child moves to a new group they will bring a letter home sharing the new sounds they will be learning.

We may write at the bottom of their reading cards particular sounds or words we would like you to support your child to learn.



Reading Scheme Expectations

Set One

Ditty

Set two sounds

Red

Green (End of Reception)

Pink

Set three sounds

Orange

Yellow

Blue (end of Year One)

Grey

Comprehension Group

Last year we changed our home readers so you will always have a RWI book and a book for sharing ('Read to me/Bedtime story')





Diagraphs - two letters that make one sound, special friends

a+y = ay say

Trigraph - three letters one sound

i+g+h = igh might

Split Diagraph - a-e make

Fred Talk

Fred in your head

Speedy Reading

We also play games such as 'Fred Fingers'



- Every child should have a Speed Sound Book in their reading folder for you to support their learning.
- As our weekly homelearning task, we also send links to RWI videos for every child linked to their RWI group. These are usually sent on a Monday. Please let us know if you are having problems accessing these.
- We will also start sending home word sheets for your child to practise reading with you at home.



Improving Key Reading Skills

Vocabulary

Inference

Predict

Explain

Retrieve

Sequence

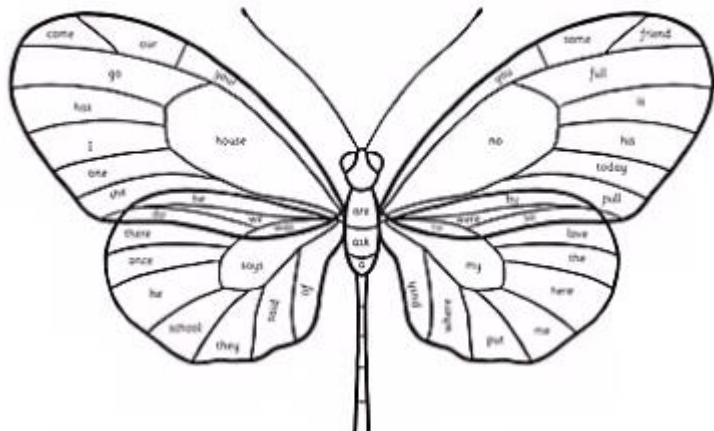


Children are expected to read and spell all Year 1 common exception words by July 2025.

These are the most common words they will find in their reading books.

We will send home our assessments each term for you to continue supporting any gaps your child may still have.

Common Exception Words Colouring Butterfly



National Phonics Screen Check for all Children in Year One



Why?

It is a statutory check for all Year One children in all schools.

It is to confirm that your child has reached the expected level at the end of Year One in phonics.



When?

All children will take the phonics check in the week beginning Monday 9th of June 2025.

No holidays will be authorised in this week.

Please do not book holidays in the weeks before as children will miss out on additional support where needed.



How?

Children will work individually, with their own class teacher in a quiet, non-stressful environment.

They will be given 40 words to read. Half are real words, half are non-words (alien words/nonsense words).

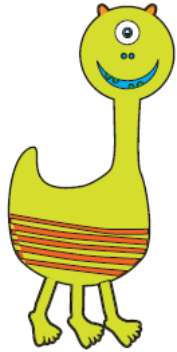
The teacher will record their answers.

We treat this as a fun activity or quiz as we do not want children to worry.

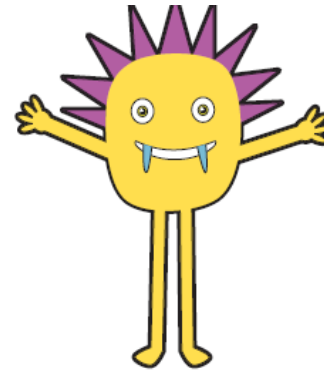


Can you read these alien words?

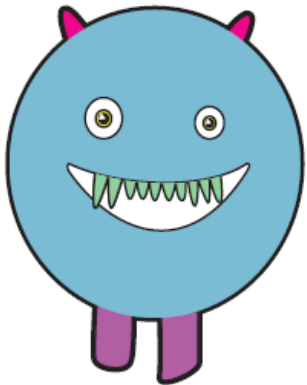
voisk



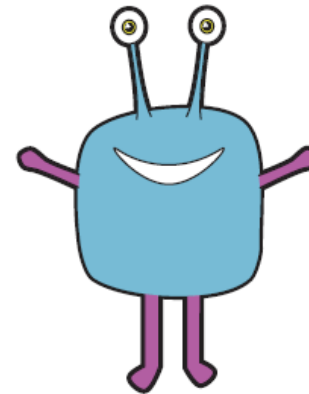
quigh



zale



skarld



The children are taught to spot the 'Special Friends' then 'Fred Talk' then read the word.



Booklet format

skap



twice

blorn



gloom

meft



turn

veems



mode



Expectations

Children will be expected to read a set amount of words correctly to reach the expected standard.

The threshold can change each year and schools are not informed of the threshold until two weeks after the screenings completion. The last expected standard mark was 32 correct words out of 40.



What happens after the screen?

You will be informed if your child has reached the expected level in their school report pack in July 2025.

Any child who falls below the expected level will be supported with additional phonics intervention.

Any child who did not reach the expected level will re-sit the check in Year 2.



Any questions?

