



# RLI News

10th February 2023

This week each class have been celebrating the value of caring and respect in their classrooms. The teachers have told me how caring they are being with each other, how polite they are being walking around school and how they are using their manners.

Next week will be the last week of the Spring 1st Half Term. The children have shown great learning in school and we are so proud of the effort that they are putting in to their school work. We can't wait to share their progress with you at our next learning reviews in March. In next week's newsletter we will be sharing a round up of all of the fantastic work and activities the children have been doing so far.

Just a quick reminder about uniform in school. Our uniform is black/grey trousers, skirts or dresses; white polo top or shirt/blouse and a red jumper or cardigan. We ask that children wear black shoes also. On their PE days children can wear dark coloured jogging bottoms or shorts, a white top and their school red jumper. For this day they can wear trainers.

**If you have any spare uniform / dark coloured bottoms or children's pants/ knickers that you can donate to school as spares, we'd be very grateful.**

This week's behaviour focus...

*We would like the children to continue to think about **respect**, particularly thinking about focusing during learning times and showing attention to their learning.*

## Dates for your Diary

14th February—PTFA Meeting—straight after drop off

15th February—Year 2 Gallery—2:40pm

17th February—Last day of term

20th—26th February—Half Term

27th February—Caryl Hart Author Visit

28th February—Breakfast story time —Yr 1

2nd March—Breakfast story time Yr 2

2nd March—World Book Day (Dress up)

3rd March—Breakfast story time Rec

1st, 15th & 16th March—

Potential Teacher Strike Days

21st and 23rd March—Learning Reviews (letters coming shortly)

24th March Easter Production for Year 1

**Year 2 Gallery** for parents Wednesday  
15th February 2023 at 2:40.

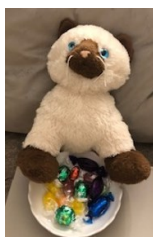
Our Year 2 parents are invited to attend the year 2 African gallery. Our year 2 learners would love to show off some of their recent work.



## Attendance

**SAM** (School Attendance Matters) is going to the winning class... Moorhen Class

**OTIS** (On Time in School) is spending the week between the winning class Goose Class.



This week's Whole School Attendance is **90.6%**  
We are aiming for a target of 96%.

## **PTFA**

This week we had our first PTFA meeting. We shared some great ideas about what we could do to support fundraising in our school. We have planned our next meeting for an after drop off time on Tuesday 14th February. We will have tea and coffee waiting at 8:45am in the school hall. Please come and join us, we already have some exciting ideas and would love to have some more people to help us.



## **Super Scientists in Year 1**

Children in Year 1 have been conducting an experiment this week to see which material would be the best to make a coat for Mrs Snape's dog, Ted. Children have had to test each of the materials and work out which is the best material to keep Ted dry.



## **We need your help!**

Next week (if the children fill the green token container) we are hoping to do some planting to brighten up the outside of our school. We are in need of some pots, compost and any growing sticks that you may have to spare. If you could bring these to school on Monday we'd be very grateful.



## **Hair Beware!**

We've had a rise in the number of cases of headlice in the last couple of weeks. Could we remind parents that if the children have long hair that this must be tied up. This will limit the ease of headlice spreading from child to child.



## **Toys in school**

We've again noticed that the children are bringing toys from home in to school.

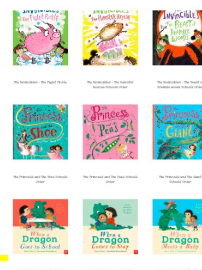


Can we please ask that children aren't bringing things in to school as we'd hate for things to get lost or broken in school.

## **Author Visit**

We are excited to share with you that we will be having Caryl Hart, the author, into school on Monday 27th February. If you would like to pre-order any of her books for the visit, then Caryl has shared a link, which we have included below. There is also the opportunity for these books to be signed. All orders must be in place before Friday 17th February.  
<https://carylhart.com/schools-bookshop>

The password has been sent via Parent Mail.



## **PE Days**

Reception—Tuesday **and Wednesday** from after Half Term

Year 1—Wednesday and Friday

Year 2—Monday and Thursday

Children must wear PE Kit to school on these days.

Can we please ask that the children wear their school jumpers or cardigans on PE Days.







**NOW Tennis**

Learn. Play. Live tennis.

# HALF TERM TENNIS CAMPS

20TH-24TH FEBRUARY  
**BOOK TODAY**

For more info email [info@inspire2coach.co.uk](mailto:info@inspire2coach.co.uk)

A brand of  
**inspire2coach**

Follow us: @ f t y



# FREE TRIAL FEBRUARY

**Join us today!**

email [info@inspire2coach.co.uk](mailto:info@inspire2coach.co.uk)  
to book your free trial session

**NOW Tennis**

Learn. Play. Live tennis.



## Educaterers Lunch Menu Week 3

Covered and Monoculture: 189, 1910, 2101, 2102, 2123, 231, 192, 613  
Landscape: 204, 191, 1919, 2019, 2111, 1919, 2019, 201, 191, 613  
On: 189, 1919, 2102, 2101, 1923, 231, 613

### Meat Free Monday



**Cheese and Tomato Pizza D.G.**



**(v) Veg Korma M.D.E.**



**(v) Cheeze Beans D.**



**(v) Cheddar Cheese G.D.**

### Week 3 Dessert Menu

Every day we offer:

(v) Yogurt (D)  
or fresh fruit as alternative dessert options

**Monday**

(v) Homemade Chocolate Cradnel

**Tuesday**

(v) Chocolate or Strawberry Sweet Mousse D.

(v) Homemade Fruity Flapjack G.

**Wednesday**

(v) Homemade Iced Sponge  
with Sprinkles G.E. and Custard D.

**Thursday**

Jelly with Fruit

(v) Homemade Carrot and  
Orange Cookies G.

**Friday**

(v) Cheddar Cheese, Crackers and Apple  
Slices G.D

(v) Ice Cream Tub D.



**Pork Sausages G.SU.**



**(v) Chinese Soyle Plant Based "Meat" balls Noodles cornish Gluten**



**British Roast Chicken G.**



**Roast Beef in Gravy, York Pudd D.E.G**



**(v) Quorn Roast G. (v) Fresh Peas D.E.G**



**Tuna Mayo Mousse F.E.G**



**Chicken Fajita Wrap G.**



**(v) Mac 'n' Cheese G.D.**



**British Ham G.**



**Breaded Fish Fillet Fingers F.**



**(v) Breaded Vegetable Fingers G.**



**Egg Mayo Mousse G.E.**

### Key

**VG = vegan**  
V = vegetarian  
D = Dairy  
N = Nuts  
S = Soy  
E = Egg  
  
G = Gluten/Wheat  
F = Fish  
M = Mustard  
SO = Soy  
SU = Sultana

All our meals include a carbohydrate accompaniment, seasonal vegetables and/or salad. We offer a choice of fruit juice cordal, semi-skimmed milk or water to drink. Some schools offer a Hydration Station instead, comprising of unlimited chilled water flavoured with fresh fruit.

**Accompaniments may vary to those shown.**

**PLEASE NOTE:** some schools serve the cold option in a deli bag with vegetable sticks or salad, a dessert and a drink